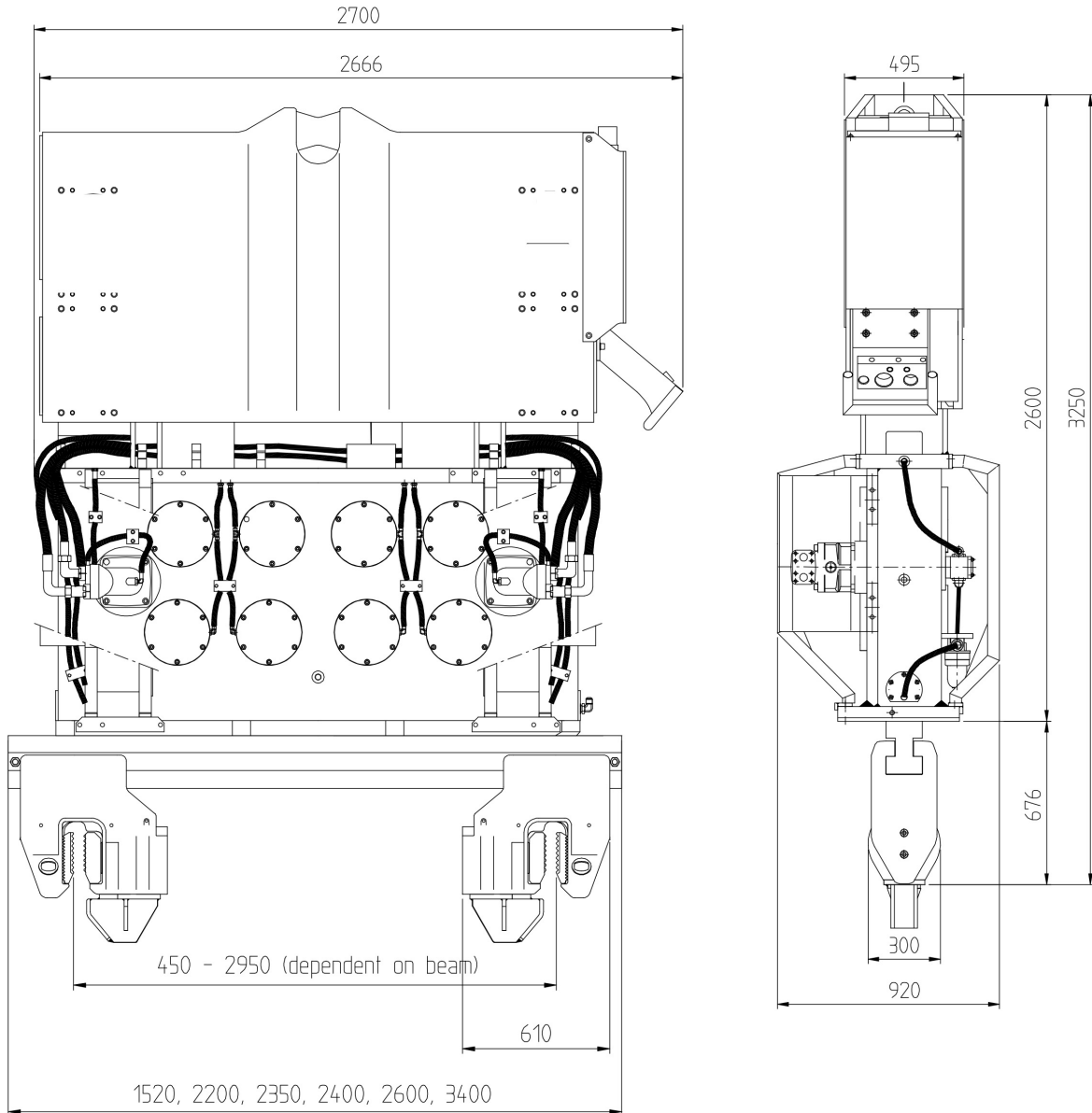




Specifications: V-46-BV Uses P-550 Power Pack

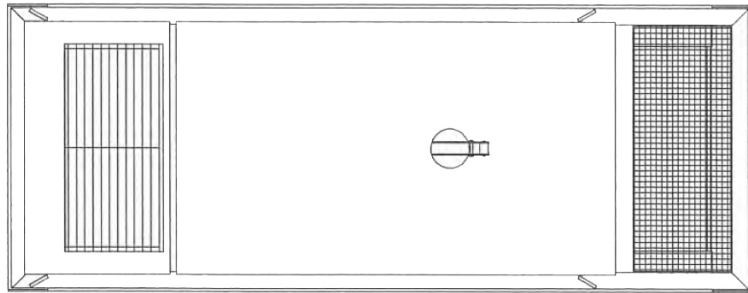
Specifications V-46-BV



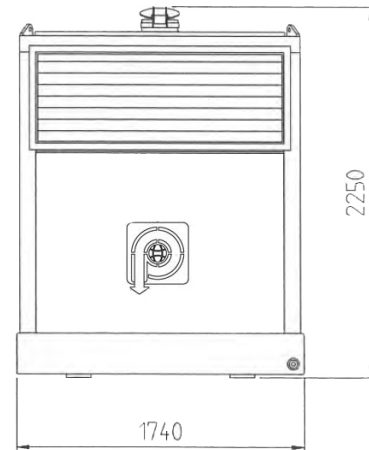
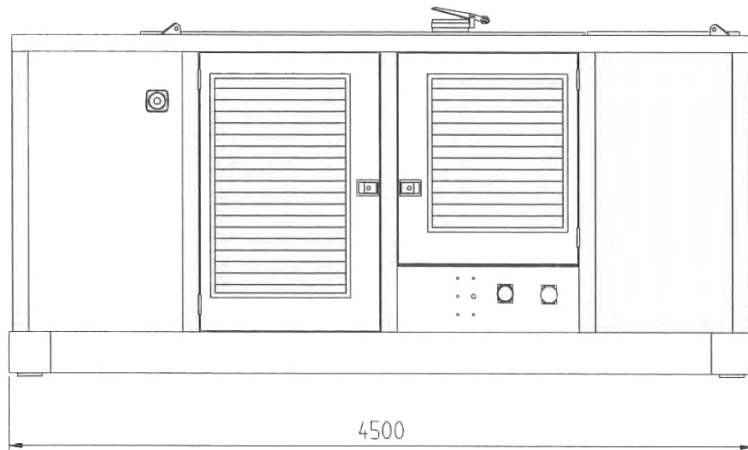
Specifications:

Eccentric moment	46 kgm	3993 in lbs
Max. centrifugal force	1250 kN	190 ton
Max. frequency	1570 RPM	1570 RPM
Max. amplitude excl. clamp	23.5 mm	.925 in
Max. amplitude incl. clamp	18.0 mm	.709 in
Max. static line-pull	400 kN	45 ton
Max. hydraulic power	346/470 kW/HP	346/470 kW/HP
Max. operating pressure	340 bar	340 bar
Max. oil flow	610 l/min	161 gpm
Dyn. weight excl. clamp	3950 kg	8708 lbs
Dyn. weight incl. clamp	5050 kg	11133 lbs
Total weight incl. clamp	8550 kg	18849 lbs
Transport weight	9250 kg	20393 lbs

Specifications: Power Pack P-550



Dimensions:		
L	177.2"	4500 mm
W	68.5"	1740 mm
H	88.6"	2250 mm



Specifications:		
Diesel Engine:	Caterpillar C15 acert	
Max. theoretical power:	403/548 kW/PK (DIN)	
Max. Frequency:	2100 rpm	2100 VPM
Max. Working pressure:	350 bar	5076 psi
Hydraulic pump:	Rexroth A 11 VL0260/60	
Max. oil flow:	650 L/min	163.3 gpm
Diesel oil:	650 L	172 gal
Hydraulic oil:	1200 L	317 gal
Weight:	7600 kg	16,755 lbs