



**SMARTER
DRIVING
PERFORMANCE**



Diesel Hammer Models



*Approximately

| Model # | | D6-42/D8-52 | D12-42 | D19-42 | D25-32/D30-32 | D36-32/D46-32/D50-32 |
|--|--------|-----------------------------|---------------|---------------|-------------------------------|---|
| *Weight of Hammer: (guiding not included) | lbs | 5,401 / 6,076 | 8,296 | 10,503 | 15,113 / 16,215 | 21,705 / 24,859 / 25,053 |
| *Weight of Piston: | lbs | 1,323 / 1,768 | 2,822 | 4,012 | 5,512 / 6,614 | 7,937 / 10,141 / 11,023 |
| *Weight of Impact Block: | lbs | 408 | 661 | 780 | 1,459 | 2,359 |
| *Energy per blow: Max - Min | ft lbs | 12,539-7,081 / 18,760-9,480 | 29,798-14,973 | 42,410-21,463 | 58,245-29,484 / 69,895-35,381 | 83,860-40,935 / 107,315-54,358 / 116,643-59,727 |
| *Number of blows: Min - Max | min | 39-52 / 37-52 | 37-52 | 37-52 | 37-52 / 36-52 | 36-52 / 35-52 / 35-52 |
| *Dimensions | | | | | | |
| Length of Hammer | ft. in | 14' 1" / 15' 5" | 16' 7" | 16' 8" | 17' 9" | 18' 4" |
| Hammer length w/ starter guides | ft. in | 15' 9" / 17' 1" | 18' 2" | 18' 4" | 21' 3" | 21' |
| Guiding Width Min. | in | 21" | 21" | 21" | 26" | 32" |
| Width of Hammer | in | 16" | 17" | 19" | 25" | 31" |
| Hammer Depth | ft. in | 1' 11" | 1' 9" | 2' 2" | 3' | 3' 4" |



*Approximately

| Model # | | D62-22/D70-32 | D80-23/D100-13 | D125-32/D138-32 | D160-32/D180-32 | D225-22/D250-22/D280-22 |
|--|--------|---------------------------------|-----------------------------------|-----------------------------------|-----------------------------------|---|
| *Weight of Hammer: (guiding not included) | lbs | 31,650 / 34,357 | 38,559 / 42,968 | 61,613 / 64,479 | 81,948 / 86,358 | 113,693 / 120,439 / 127,929 |
| *Weight of Piston: | lbs | 13,670 / 15,432 | 17,637 / 22,046 | 27,558 / 30,424 | 35,274 / 39,683 | 49,612 / 55,116 / 61,729 |
| *Weight of Impact Block: | lbs | 2,425 | 4,630 | 6,702 | 9,601 | 14,065 |
| *Energy per blow: Max - Min | ft lbs | 161,526-78,919 / 182,074-89,043 | 196,929-126,123 / 246,006-157,735 | 307,563-184,538 / 340,016-217,581 | 394,221-241,477 / 443,913-271,644 | 564,973-293,786 / 631,352-334,617 / 688,145-357,835 |
| *Number of blows: Min - Max | min. | 36-50/ 36-45 | 36-45 | 36-45 | 36-46 | 36-50 |
| *Dimensions | | | | | | |
| Length of Hammer | ft. in | 20' 3" / 22' 2" | 23' 8" / 24' 2" | 25' 7" / 26' 2" | 25' 9" / 27' 5" | 28' / 28' 7" / 29' |
| Hammer length w/ starter guides | ft. in | 22' 7" / 24' | 27' / 27' 7" | 29' 1" / 29' 6" | 29' 2" / 30' 8" | 30' / 30' 5" / 31' |
| Guiding Width Min. | in | 32" | 42" | 42" | 48" | 68" |
| Width of Hammer | in | 30" | 35" | 41" | 46" | 53" |
| Hammer Depth | ft. in | 4' 4.5" | 4' 2" | 4' 9" | 5' 6" | 6' 1" |

Power Pack Sizes

*For more information please visit www.pileco.com

HP60—60 HP

Total Weight approx.: **3,350 lbs**
Oil Flow: 114 L/m or 30 gpm



P-160—114 HP

Total Weight approx.: 5,732 lbs
Oil flow: 160 L/min or 42.3 gpm

P-250—250 HP

Total Weight approx.: 11,574 lbs
Oil flow: 250L/min or 66 gpm



P-400—400 HP

Total Weight approx.: 16,314 lbs
Oil Flow: 440L/m or 116 gpm

P-600—575 HP

Total Weight approx.: 16,755 lbs
Oil flow: 610L/min or 161 gpm

HP60 SPECS

| Dimensions | | |
|------------|---------|---------|
| L | 68 3/8" | 1737 mm |
| W | 50 1/8" | 1273 mm |
| H | 61 1/4" | 1556 mm |



Engine: CAT 2.2 L Tier 4 Diesel

Max Engine Power: 67 HP @ 2,800 RPM

Total Weight Approx.: 3,350 lbs with 90% fill on hydraulic oil and diesel

Max Pressure: of 3,000 psi, system is regulated to 2,700 psi through DCV

All units are 6 Banks: Bank 1: 30 GPM

Bank 2-6: 10 GPM

Leads Assembly

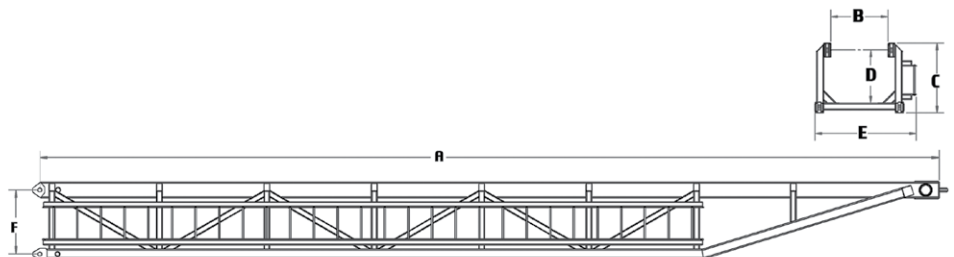
U-Style Leads

| Pin Style | F | B | C | D | E | Weight p/ft | Diesel Hammer |
|-------------|-------|-------|-----|-------|-------|--------------|---------------|
| U-21 | 30.8" | 21.5" | 35" | 27" | 45" | 105 lbs./ft. | D19-42 |
| U-26 | 32.5" | 26.5" | 39" | 30" | 51.5" | 140 lbs./ft. | D30-32 |
| U-32 | 32.5" | 32.5" | 39" | 30" | 58" | 150 lbs./ft. | D62-32 |
| U-42 | 45.5" | 42.5" | 52" | 34" | 68.5" | 200 lbs./ft. | D138-32 |
| U-48 | 51.5" | 48.5" | 58" | 37" | 74.5" | 225 lbs./ft. | D180-32 |
| U-54 | 51.5" | 54.5" | 58" | 37" | 74.5" | 270 lbs./ft. | D180-32 |
| U-66 | 54" | 66.5" | 61" | 43.5" | 92.5" | 350 lbs./ft. | D180-32 |

TOP SECTION:

40ft and 20ft

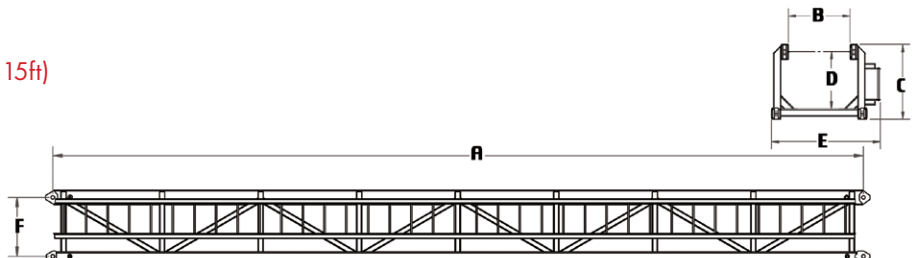
| | | |
|----|--------|--------|
| | 40ft | 20ft |
| A= | 38' 5" | 19' 5" |



INTERMEDIATE SECTION:

40ft, 30ft, 25ft, 20ft, 15ft, 10ft, 5ft (Special order 30ft & 15ft)

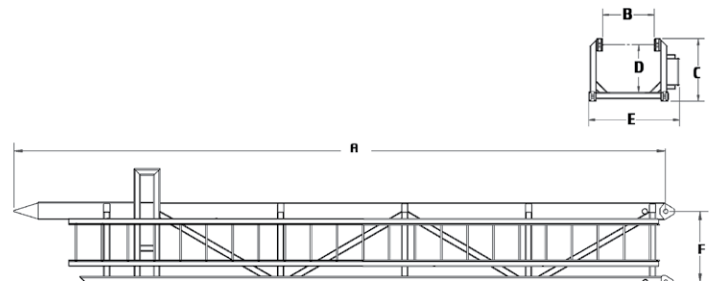
| | | | | | | |
|----|--------|--------|--------|------|------|-----|
| | 40ft | 30ft | 20ft | 15ft | 10ft | 5ft |
| A= | 37' 5" | 27' 5" | 18' 5" | 15' | 10' | 5' |



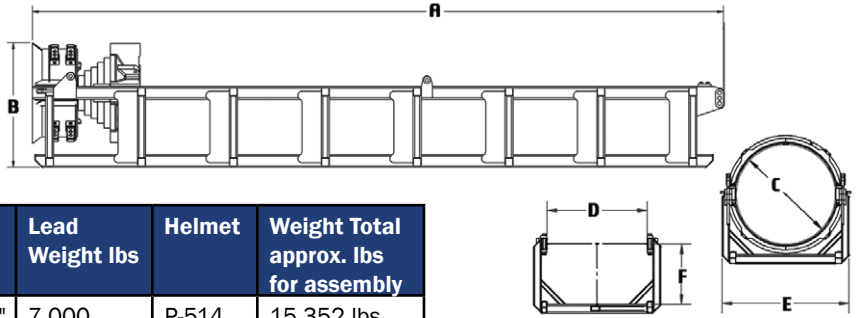
STAB SECTION:

25ft, 20ft, 15ft, 10ft, 5ft (Special order 25ft, 15ft, 10ft, & 5ft)

| | | | | | |
|----|------|------|------|------|-----|
| | 25ft | 20ft | 15ft | 10ft | 5ft |
| A= | 25' | 19' | 15' | 10' | 5' |



Offshore Leads A 104 Series



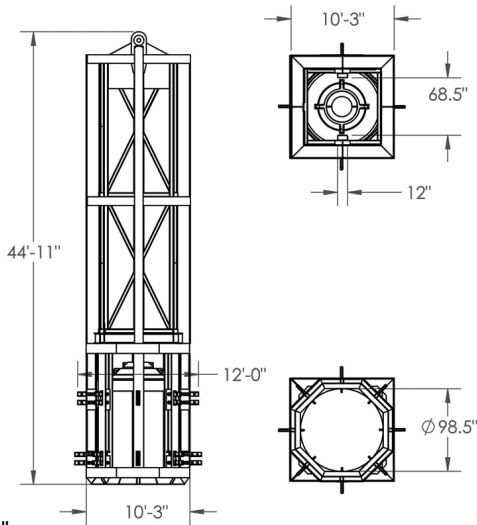
| Lead Type/P# Assembly | A | B | C= pile Ø | D | E | F | Lead Weight lbs | Helmet | Weight Total approx. lbs for assembly |
|-----------------------|-------|-------|-----------|-------|-------|-----|-----------------|--------|---------------------------------------|
| A104-36(P-700) | 27.2' | 62.5" | 36" | 42.5" | 58.5" | 29" | 7,000 | P-514 | 15,352 lbs. |
| A104-42(P-701) | 36' | 72" | 42" | 48.5" | 66.5" | 37" | 7,500 | P-515 | 24,551 lbs |
| A104-48(P-702) | 36' | 75" | 48" | 54.5" | 72.5" | 39" | 11,908 | P-515 | 29,984 lbs |
| A104-66(P-704) | 40' | 85" | 66" | 66.5" | 84.5" | 40" | 13,880 | P-516 | 45,757 lbs |

Offshore Leads OS Series

OS 98"

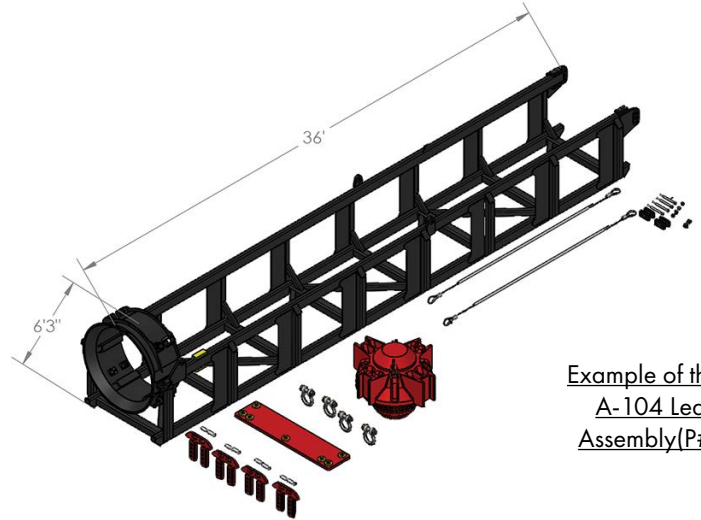
Approx. Weight: 82,250 lbs

For Pile Size: 60", 66", 72", 84", 96", 98"



OS-98 Optional 54" Guiding add 7,135 lbs approx.

OS-98 Lead uses flat drive plate with adjustable guide shoes



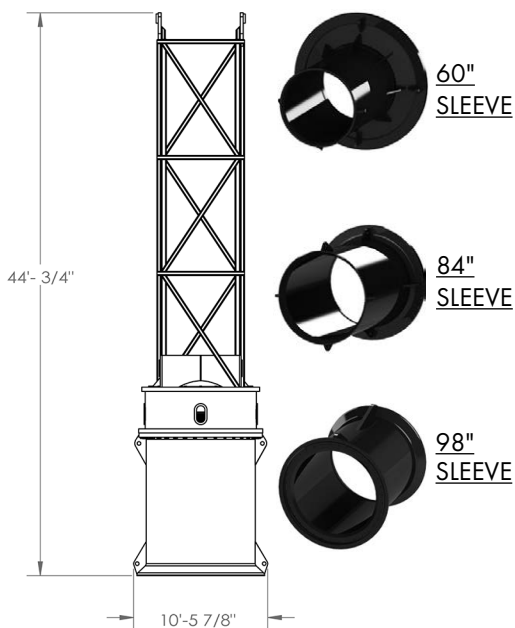
Example of the A-104 Lead Assembly(P#)

OS 10098 98"

Approx. Weight: 102,550 lbs

For Pile Size: 54", 60", 66", 72", 84", 96", 98"

Lead uses Stepped 98" Drive plate

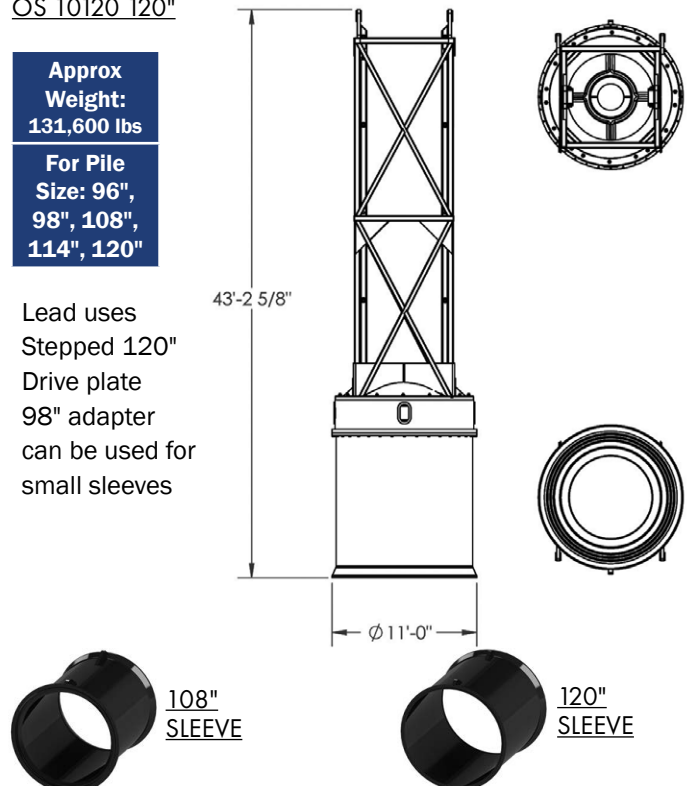


OS 10120 120"

Approx Weight: 131,600 lbs

For Pile Size: 96", 98", 108", 114", 120"

Lead uses Stepped 120" Drive plate 98" adapter can be used for small sleeves



Primary Assembly



P-500 Primary Helmet 21"
Total Weight approx.: 1,414 lbs



P-501 Primary Helmet 26"
Total Weight approx.: 3,068 lbs



P-503 Primary Helmet 32"
Total Weight approx.: 3,618 lbs



P-504 Primary Helmet 32" HD
Total Weight approx.: 3,913 lbs



P-507 Primary Helmet 42"
Total Weight approx.: 6,493 lbs

Universal Assembly



P-513 Universal Helmet 21"
Total Weight approx.: 1,268 lbs

Insert

*weights and other details on website

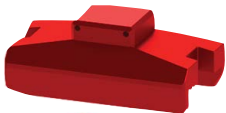
*12", 14", 16", 18", 20"
Concrete Piles



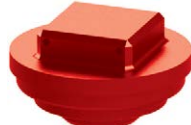
*10", 12", 14", 16", 18"
H-Piles



*Up to in Length:
30", 38", 39", 43", 51"
Sheet Piles

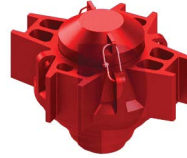


*12", 14", 16", 18",
24", 30" Ø
Pipe Piles



500506
Up to 12" Ø Timber Piles
Total Weight approx.: 560 lbs

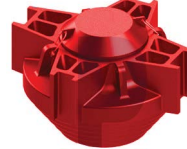
Offshore Assembly



P-514 Offshore Helmet 36"
Total Weight approx.: 7,393 lbs



P-515 Offshore Helmet 48"
Total Weight approx.: 16,092 lbs



P-516 Offshore Helmet 66"
Total Weight approx.: 29,981 lbs



P-517 98" Drive Plate
Total Weight approx.: 42,918 lbs



P-518 120" Drive Plate
Total Weight approx.: 65,519 lbs



P-528 98" Step Drive Plate
Total Weight approx.: 51,096 lbs



P-529 120" Step Drive Plate
Total Weight approx.: 79,139 lbs

NeckAdpters



48078 A104-48 Neck Adapter for 78 inch
Total Weight approx.: 31,000 lbs

Square Concrete Assembly



P-510 Concrete Helmet 24"
Total Weight approx.: 8,192 lbs



P-511HD Concrete Helmet 30"
Total Weight approx.: 16,132 lbs



P-512HD Concrete Helmet 36"
Total Weight approx.: 16,221 lbs

Helmet Assembly Models & Followers

Cylinder Concrete Assembly

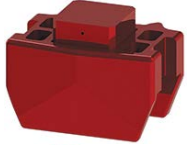


P-531 36" Concrete Cylinder Helmet
Total Weight approx.: 11,819 lbs



P-519 54" Concrete Cylinder Helmet
Total Weight approx.: 29,398 lbs

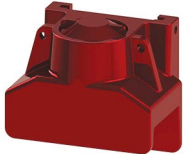
EU Assembly



P-505 EU Helmet
Total Weight approx.: 1,702 lbs



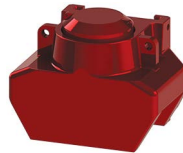
P-520 EU Helmet
Total Weight approx.: 1,426 lbs



P-524 EU Helmet
Total Weight approx.: 2,076 lbs



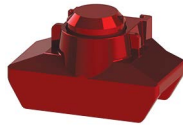
P-521 EU Helmet
Total Weight approx.: 1,576 lbs



P-525 EU Helmet
Total Weight approx.: 3,667 lbs



P-522 EU Helmet
Total Weight approx.: 2,087 lbs



P-526 EU Helmet
Total Weight approx.: 4,967 lbs



P-523 EU Helmet
Total Weight approx.: 2,537 lbs

Followers



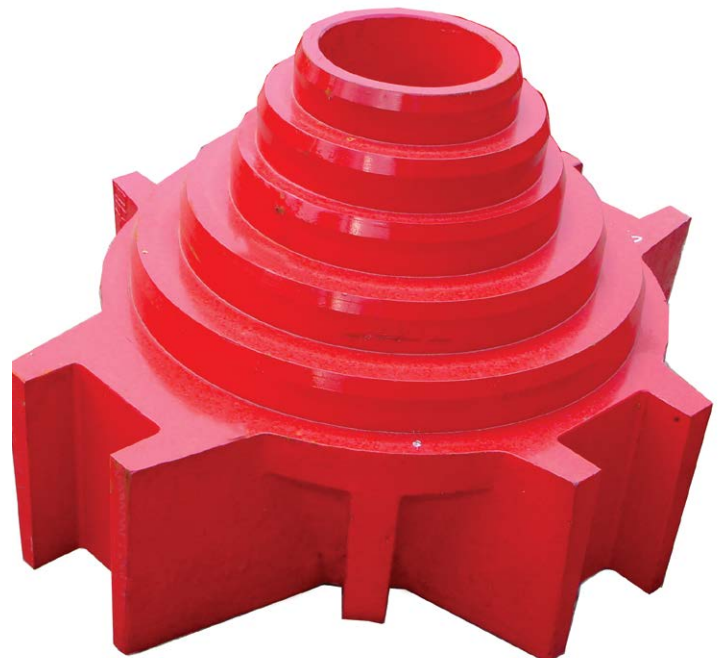
18" Followers Pipe Assembly
Total Weight approx.:
10ft: 3,293 lbs
20ft: 6,586 lbs
30ft: 9,331 lbs
40ft: 12,077 lbs



18" Followers Lift Sleeve with Guiding
Total Weight approx.:
U-32: 452 lbs
U-42: 583 lbs



18" Followers Lift Sleeve with Non Guiding
Total Weight approx.:
18": 302 lbs



Pile Gates

* See Website for Weights



Pile Gate Lead Section 5' and 10'
U21-U66 available



Pile Gate Concrete Square Arms
12"-36" standard
custom orders available



Pile Gate Round Arms
12"-36" standard
custom orders available



Pile Gate HP Beam Arms
12/14/16 standard
custom orders available

Spotters

1200-1 HYDRAULIC/MANUAL SPOTTER



WEIGHT lbs 4,500
Retracted 14'4"
Extended 27'(HYDRAULIC 6'8" / MECHANICAL 6')
Swing 2 Axis sideswing each way

2000 HYDRAULIC SPOTTER HEAVY DUTY



WEIGHT lbs 6,500
Retracted 20'
Extended 39'
Swing Axis Rear Swing Each Way:
15 DEG Front Rotation Each way: 15 DEG

HeadBlocks

* See Website for Weights



HeadBlock 3-Line
U21-U66 available



HeadBlock 3-Line With Roller
U21/U26 available



HeadBlock 4-Line
U21-U66 available



HeadBlock 1-Line, 1 Part
U21-U66 available



HeadBlock 1-Line, 2 Part
U21-U66 available

BoomPoint Connector



#22 Manitowoc Boom Point Connector with Rooster Sheaves



Link Belt 248 Boom Point Connector



LR1300 Boom Point Connector

Bell Adapter

* See Website for Weights



18in Bell Adapter Pin Style For U21-U42
custom orders available



24in Bell Adapter Pin Style For U32-U42
custom orders available



36in Bell Adapter Pin Style For U42-U66
custom orders available



491 Conroe Park W. Dr.
Conroe TX 77303
Tel 936.494.4200
www.PILECO.com

